

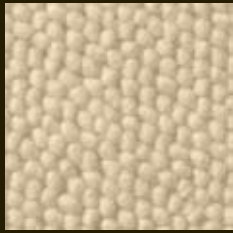
M · | · D · · ·

NOBLE STRUCTURES · NOBLE STRUCTURES



SAGA BOUCLÉ 15M SEAL BROWN

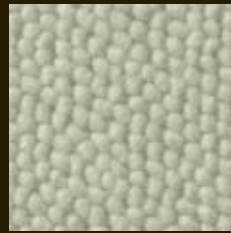
NOBLE STRUCTURES - SAGA BOUCLÉ 15M



27C6 Almond Cream



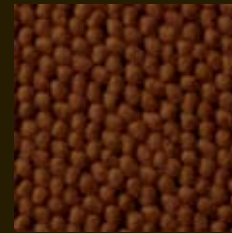
20C6 White Pearl



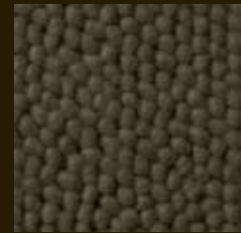
23A6 Oyster Grey



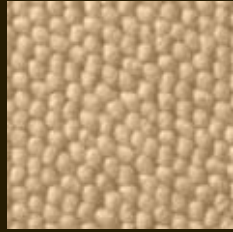
28B6 Golden Camel



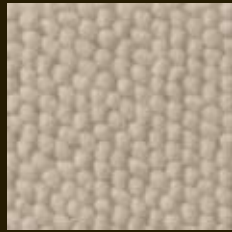
20E6 Amber Brown



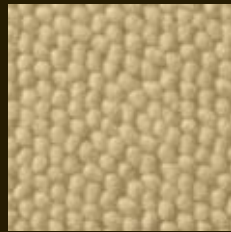
28C6 Timber Wolf



27C7 Double Cream



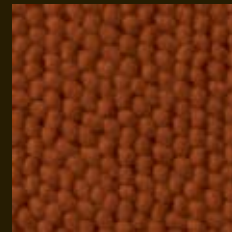
28D6 Cloud Cream



20C7 Sandshell



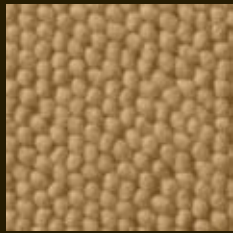
20B6 Golden Yellow



20E7 Canyon Sunset



28D7 Walnut Brown



27B6 Honey Peach



27E6 Cream taupe



28A6 Steppenwolf



28B7 Dark Gold



21E4 True Red



23D6 Seal Brown



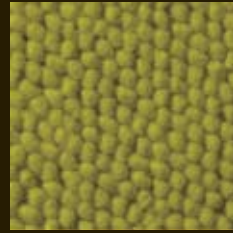
27B7 Sahara Camel



27E7 Warm Taupe



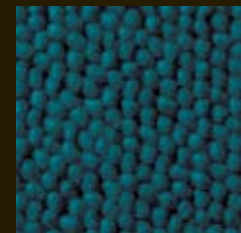
28C6 Timber Wolf



20B7 Mellow Lime



21E5 Red Rose



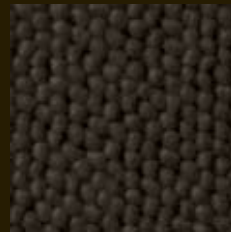
25C6 Safir Blue



28B6 Golden Camel



28A7 Antelope Brown



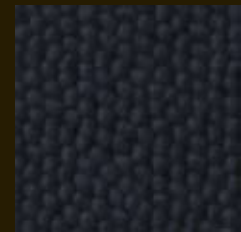
28D7 Walnut Brown



26C6 Dark Olive



21E6 Ruby Wine



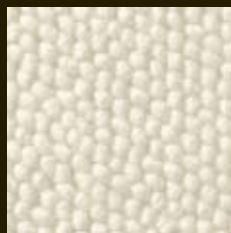
23D7 Blue Depths



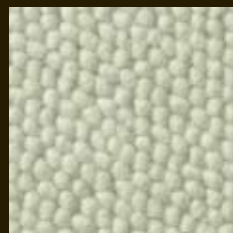
27A6 Savanna Sand



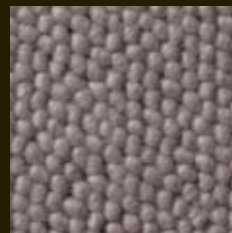
27A7 Cream Gold



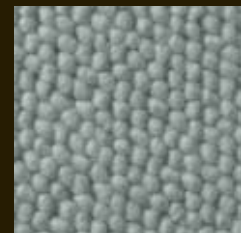
20C6 White Pearl



26E6 Frozen Dew



24A6 Twilight Mauve



23C6 Dawn Blue

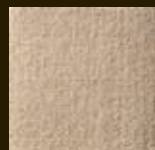
Technical information

	PILE HEIGHT APPROX. IN MM.	PILE WEIGHT APPROX. IN GR./M ²	WIDTH IN METRE
<i>MOQUETTE (VELOURS)</i>			
Wolmoquette 24	6,4	1580	3,60 - 4,55
Wolmoquette 26	7,6	1740	3,60 - 4,55
Wolmoquette 28	8,8	1960	3,60 - 4,55
Wolmoquette 12M	12,0	2700	3,60 - 4,55
Wolmoquette 15M	15,0	3000	3,60 - 4,55
Futura 9M	9,0	2400	3,60 - 4,55
Futura 15M	15,0	3300	3,60 - 4,55
Cardino 9M	9,0	1750	3,60 - 4,55
Cardino 15M	15,0	2500	3,60 - 4,55
Soie de Velours 10M	10,0	2600	3,60 - 4,55
Soie de Velours 15M	15,0	3900	3,60 - 4,55
<i>FRISÉ</i>			
Tristar Frisé 26	7,6	1600	3,60 - 4,55
Tristar Frisé 13M	13,0	2500	3,60 - 4,55
Coronado 26	7,6	2200	3,60 - 4,55
Deventer Frisé 26	7,6	2000	3,60 - 4,55
Deventer Frisé 28	8,8	2350	3,60 - 4,55
Deventer Frisé 15M	15,0	3200	3,60 - 4,55
Carole 9M	9,0	1900	3,60 - 4,55
Carole 15M	15,0	2700	3,60 - 4,55
<i>STRUCTURE</i>			
Charon 9M	9,0	2200	3,60 - 4,55
Charon 15M	15,0	3250	3,60 - 4,55
Tarnon 9M	9,0	1950	3,60 - 4,55
Ormea Bouclé 23	5,9	2250	3,60 - 4,55
Ormea Bouclé 9M	9,0	3100	3,60 - 4,55
Ormea Bouclé 15M	15,0	3900	3,60 - 4,55
<i>BOUCLÉ</i>			
Wolbouclé 23	5,9	1400	3,60 - 4,55
Ribble Loup 23	5,9	1400	3,60 - 4,55
Marillo 23	5,9	1400	3,60 - 4,55
Saga Bouclé 15M	15,0	3150	3,60 - 4,50
<i>STAIRRUNNER</i>			
Wolmoquette 28 Stairrunner	8,8	2100	0,70 or 1,00 3,60 - 4,55

32 inspirational colours in four Noble Structures: Wolmoquette, Charon, Saga Bouclé and Soie de Velours. The colours on the previous page shows the 32 inspirational colours in the Saga Bouclé structure. M.I.D. can produce any colour. Exactly according to your customers wishes. Take a look at the Custom Colour Service M.I.D. (Work with M.I.D. section) for possibilities. Printed colours are as realistic as possible, colour differences between actual product/sample may occur.



WOLMOQUETTE 15M



SOIE DE VELOURS 15M



DEVENTER FRISÉ 26



CHARON 15M

